

www.amimarine.net

KW800-MPA

*World Leaders
in Interfacing
and
Retransmission*



Mobile Pilot Aid

INTRODUCTION

The **Mobile Pilot Aid** is a cost effective portable data repeater that is used to keep the Pilot fully informed, in real-time, of the vessels every movement.

By connecting to the Pilot Port of the ship's AIS equipment, 'ship's own' navigation data generated by the ship is transmitted using Bluetooth wireless technology to the handheld MPA (PDA). The MPA, in turn, displays the data anywhere on the bridge or bridge wings within range of the transmitter (Aprox.100mtrs).

Software on the MPA extracts only the relevant data from the AIS data stream and displays this information on the MPA via user friendly software. The Pilot can tap through a number of different screens each with groups of information that the Pilot will find invaluable. The Pilot sees only 'ships own data' thus avoiding any potential conflict or confusion that might be caused by third party data.

The MPA system is compact, light and has its own battery backed power supply. Packed in a strong waterproof case it is easily carried by the Pilot as he embarks and disembarks the vessel. Once onboard the transmitter can be easily plugged into the ship's AIS via the universal Pilot port allowing the portable MPA to receive data in seconds.



AMI MARINE (UK) LTD

Unit 2 Tower Industrial Est.

Tower Lane

Eastleigh

Southampton

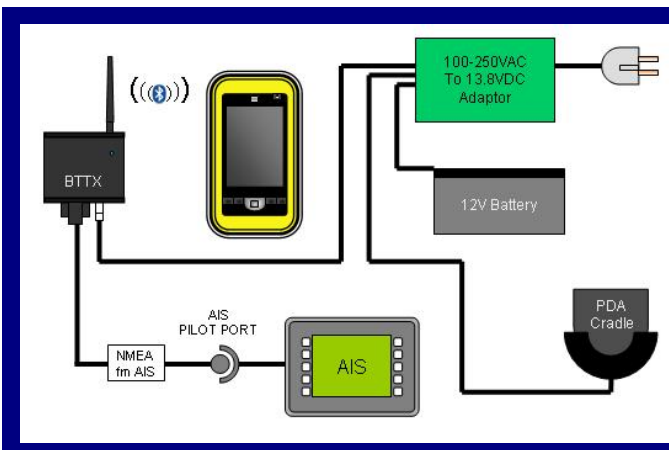
SO50 6NZ

UK

Phone: +44(0)2380 480450

E-mail: sales@amimarine.net



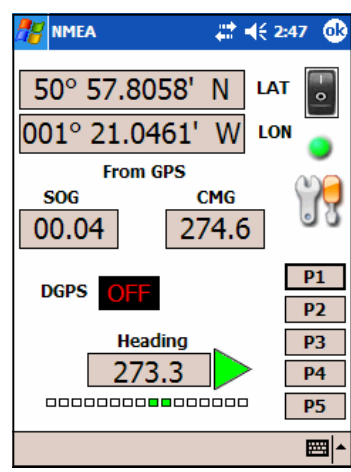
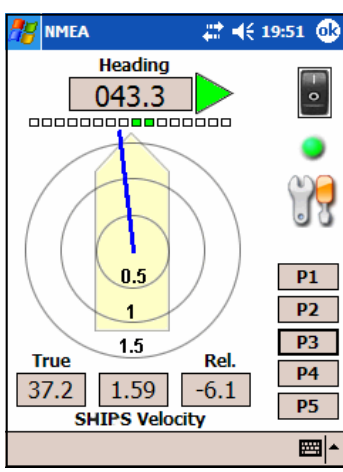


KW800-MPA

*World Leaders
in Interfacing
and
Retransmission*



AMI MARINE (UK)LTD
Unit 2 Tower Industrial Est.
Tower Lane
Eastleigh
Southampton
SO50 6NZ
UK
Phone: +44(0)2380 480450
E-mail: sales@amimarine.net



The PDA displays the Own Ship data as shown above to any remote position in the line of sight of the Blue tooth TX.

Ship's position, speed, heading and rate of turn from the AIS Own Ship Data is relayed using Bluetooth through the cB-039 BTTX to the PDA where the data is extracted and displayed on the PDA.

SPECIFICATIONS

- Parts included in MPA System**
- 1 x Weather Proof Case
 - 1 x AC/DC adaptor
 - 1 x 12v 1.1amp Battery
 - 1 x HP iPAQ214 and Docking Station
 - 1 x SDD Memory Card 512Mb
 - 1 x PDA Protective Case
 - 1 x connectBlue Serial Port Adapter cB-039-01
 - 1 x Euro Power and AIS Data Cable
 - 1 x USA to Euro Socket Adaptor

INPUT: NMEA data 38400 from the ship's AIS;
POWER: 100 to 250VAC50/60 Hz. (13.8 VDC out to Charger)

BLUETOOTH TX

POWER: 12VDC nominal.
DATA IN: 1 port configured for 38400bd NMEA 0183
DATA OUT: Paired Blue Tooth
INDICATIONS: Orange = Self test normally on Start Up.
Green = for approximately 20seconds means Ready.
Purple = for approximately 10seconds means Looking for PDA.
Blue = BTTX and PDA paired.
Red = Fault (Inform AMI).

PDA

POWER: 12VDC nominal.
DATA INPUT: Serial Data on Blue Tooth

