



# S.E.A.S. Auto Alert KW996-AA

World Leaders in  
Interfacing  
and  
Retransmission



## KW996-AA Ships Email Alert System

The Auto Alert monitoring system is designed to detect any change of status in the pre-assigned inputs and display the status change on the KW996 display.

The alert software will automatically generate a Change of Status Notification email to a designated addressee with a preset message referencing the nature of the status change.

For example — should the 'Cargo Tank High Level' reach an alarm state then an email will be generated automatically stating the alarm condition.

In addition there is also a free text message service that the ships staff can update the email addressee on the change of status situation.

The auto alert system will connect to any satellite or any other communications system that has a readily available internet connection.

The Status Conditioning Unit is designed to interface to....

- Fire Alarms
- Fire Doors Status,
- Watertight doors status
- Cargo Hold Alarms
- Machinery Equipment Status
- Customer Specified Inputs

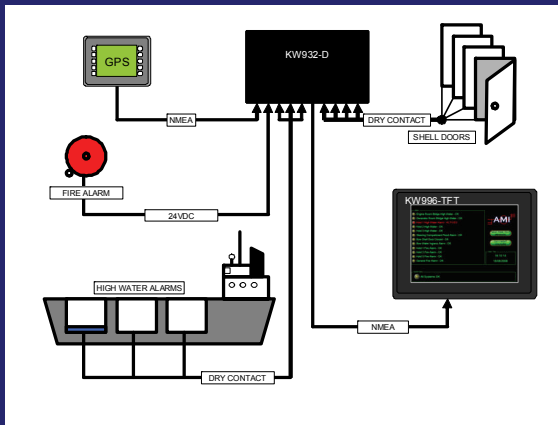
**AMI MARINE (UK) LTD**  
Unit 2  
Tower Lane  
Tower Industrial Est.  
Eastleigh  
Southampton  
SO50 6NZ  
UK

Phone: +44(0)2380 480450

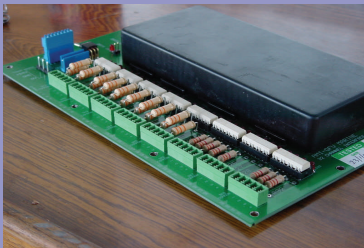
E-mail: sales@amimarine.net



# S.E.A.S. Auto Alert KW996-AA



*World Leaders in  
Interfacing  
and  
Retransmission*



Status Conditioning Unit

## AMI MARINE (UK) LTD

Unit 2

Tower Lane

Tower Industrial Est.

Eastleigh

Southampton

SO50 6NZ

UK

Phone: +44(0)2380 480450

E-mail: sales@amimarine.net



### SIGNAL INPUT REQUIREMENTS

All the system requires is an ON/OFF signal such as a contact closure or a voltage from an indication which is reported as a "0" or a "1".

Also an input from the GPS is required which is used to give the date, time and position.

The interface outputs a proprietary an IEC 61162 NMEA 0183 sentence passing through the GPS data to the KW996-AA display.

### SPECIFICATIONS:

#### DISPLAY

**INPUT:** NMEA 0183 GPS and the IEC 61162 proprietary sentence  
\$PAMI,XDR,A,0101,0000,0000,1010,\*HH

**FEATURES:** Switchable Night View.

**POWER:** Nominal 24v at 1 Amp. (18 to 28 volts)

**DIMENSIONS:** 317(W) x 62(D) x 243mm(H)

### STATUS CONDITIONING UNIT

**INPUT:** 8 groups of 4 opto isolated channels.  
Each group of 4 has its own common line.  
24v output for use with isolated dry contacts.  
Voltage input 2 to 240 volts DC or AC.  
Data pass-through facility for GPS

**OUTPUT:** IEC 61162 NMEA 0183 GPS and Proprietary compact sentence  
\$PAMI,XDR,A,0101,0000,0000,1010,\*HH  
Sampling rate 1 per second.  
Output rate 10 seconds & 1 second when input changes.

**FEATURES:** LEDS on all inputs and outputs.

**POWER:** Nominal 24v at 0.04 Amps. (18 to 32 volts)

**ENCLOSURE:** 275 x 175 x 65 mm aluminium enclosure.  
11 glands for 7mm cable.